



MICHELLE CHASE

Height 5'6" Bust 34" Waist 26" Hips 35" Dress 4 US Shoe 9 US (kids)
 Hair Brown Eyes Brown

Michelle Radovan

Heritage: German/Filipa	Height: 5'11"
Eyes: Brown	Measurements: 34-26-35
Hair: Brown	Weight: 135

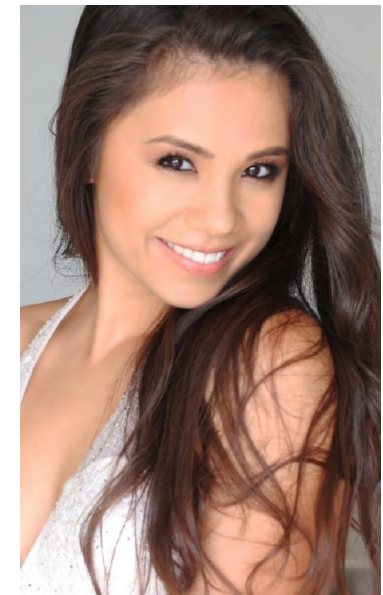
Film:
 One Kiss Day background Director Chuck Mizal
 Emancipated supporting Director F.A. Zayas
 The Fence LEAD Director Nere Vial

Commercial Television:
 Hawaii 5.0 (Pilot) featured background 1001 Stories & Blue Water Media
 UH Manoa Recruitment Commercial supporting 1001 Stories & Blue Water Media
 UH Manoa College of Education PSA supporting Blue Water Media & 1001 Stories
 Vail Ski Commercial Principal 1001 Stories
 USA's Next Top Model: Newly Good-Looking Press Director Nicole Eppelto

Modeling:
 UH Manoa Fashion Show
 Delta Torii Academy Photo Shoot
 Lodi Hawaii May Calendar Fashion Show
 enLight Studios Wedding Demo Shoot
 Hawaii Wedding Expo Fashion Show Nancy's Fashion 2008 Attrition by Delta Prom Catalog
 Aloha Tower Pre-Independence Day Fashion Show
 17 years up in Maui - Hawaii Fresh Light Competition
 F.A.C.E. Fashion Show - Michael Kaye (New York Designer)
 Vancouver Expo - Shoshita Fashion Show
 Hawaii Wedding Expo Fashion Show Nancy's Fashion

Training:
 Scott Rogers Auditioning Workshop
 Margie of Dorenda Acting Workshop
 Denise Miller Director's Workshop at LMU
 Jodi Yoshida Acting classes
 Paul Panover Punjoo School Acting Fundamentals

Special Skills: Hobbies: Registered Nurse, German speaking, Hula, Experienced in competitive USA Gymnastics, Taekwondo, and Tae Kwon do, Filipino cultural dances, Yoga



PREMIER
 MODELS & TALENT