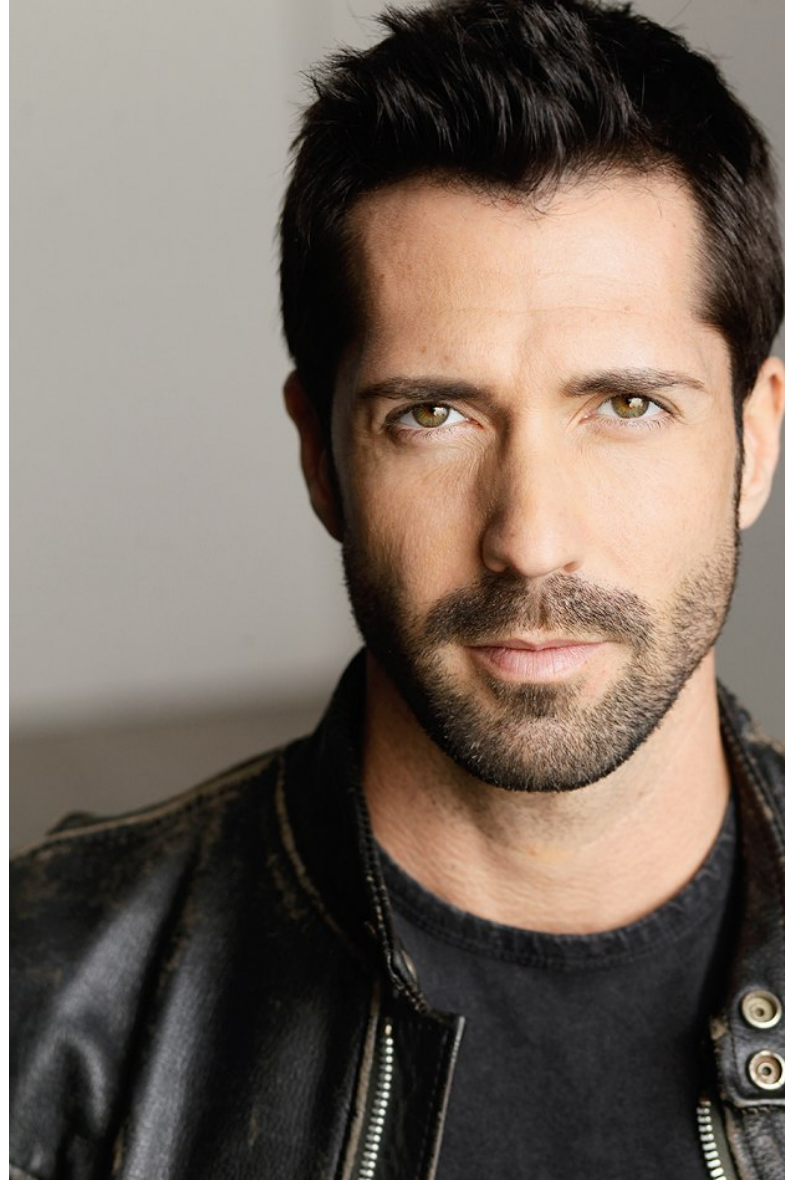


**PREMIER**  
MODELS & TALENT



**PATRICK CRONEN**

Height 5'10"   Waist 31.5"   Inseam 30.5"   Shoe 9 US   Hair Brown   Eyes Green

# PREMIER

MODELS & TALENT

## PATRICK CRONEN

SAG-AFTRA  
[imdb.me/patrickcronen](http://imdb.me/patrickcronen)  
[patrickcronen.com](http://patrickcronen.com)

For Agency Info  
Please See  
Contact Page

HAIR: BROWN      EYES: HAZEL      HEIGHT: 5'10"      WEIGHT: 165

### FILM

HOSTAGE HOUSE	LEAD	LIFETIME/DAWNS LIGHT MEDIA
AIDY KANE	LEAD	BEN BRYANT PRODUCTIONS
HOME	LEAD	AFI
DIVERGENT: SHATTER REALITY	LEAD	CORY STRASSBURGER/LIONSGATE
THE BADGER GAME	LEAD	BADGER FILMS/ETHAN MANIQUIS
I'M NOT SORRY	LEAD	AMERICAN FILM INSTITUTE
GOOD KNIGHT	LEAD	ARTISTIC ANALOGIES FILMS
THE LOVE TRIANGLE	LEAD	MY TIME / KRISTINA SEXTON
CASUALTIES	SUPPORTING	SBB PRODUCTIONS
VINDICATION	SUPPORTING	MASTROPIECE FILMS
BROKEN ENGLISH	FEATURED	VOX 3 FILMS

### TELEVISION

THOSE WHO CAN'T	GUEST STAR	truTV
JANE THE VIRGIN	CO-STAR	CW
LIFE IN PIECES	CO-STAR	CBS
YOUNG AND THE RESTLESS	RECURRING	CBS
DAYS OF OUR LIVES	RECURRING	NBC
ALL MY CHILDREN	RECURRING	ABC

### INTERNET

PLEASE SEND NEWS (TV)	LEAD	ACTON NEWS PRODUCTIONS
THE GAUNTLET (TV)	RECURRING GUEST STAR	TONY SHAND PRODUCTIONS
DIVERGENT: SHATTER REALITY	LEAD	HYDRA STUDIOS/LIONSGATE

### THEATRE

HOBOKEN	LEAD	HOLLYWOOD FRINGE FESTIVAL 19
THIS IS A MAN'S WORLD	LEAD	TC CARSON, DIR.
PSYCHO BEACH PARTY	LEAD	STAGE ONE THEATRE
BOYS' LIFE	LEAD	AMSTERDAM ARTISTS

### COMMERCIAL CONFLICTS AVAILABLE ON REQUEST

### TRAINING

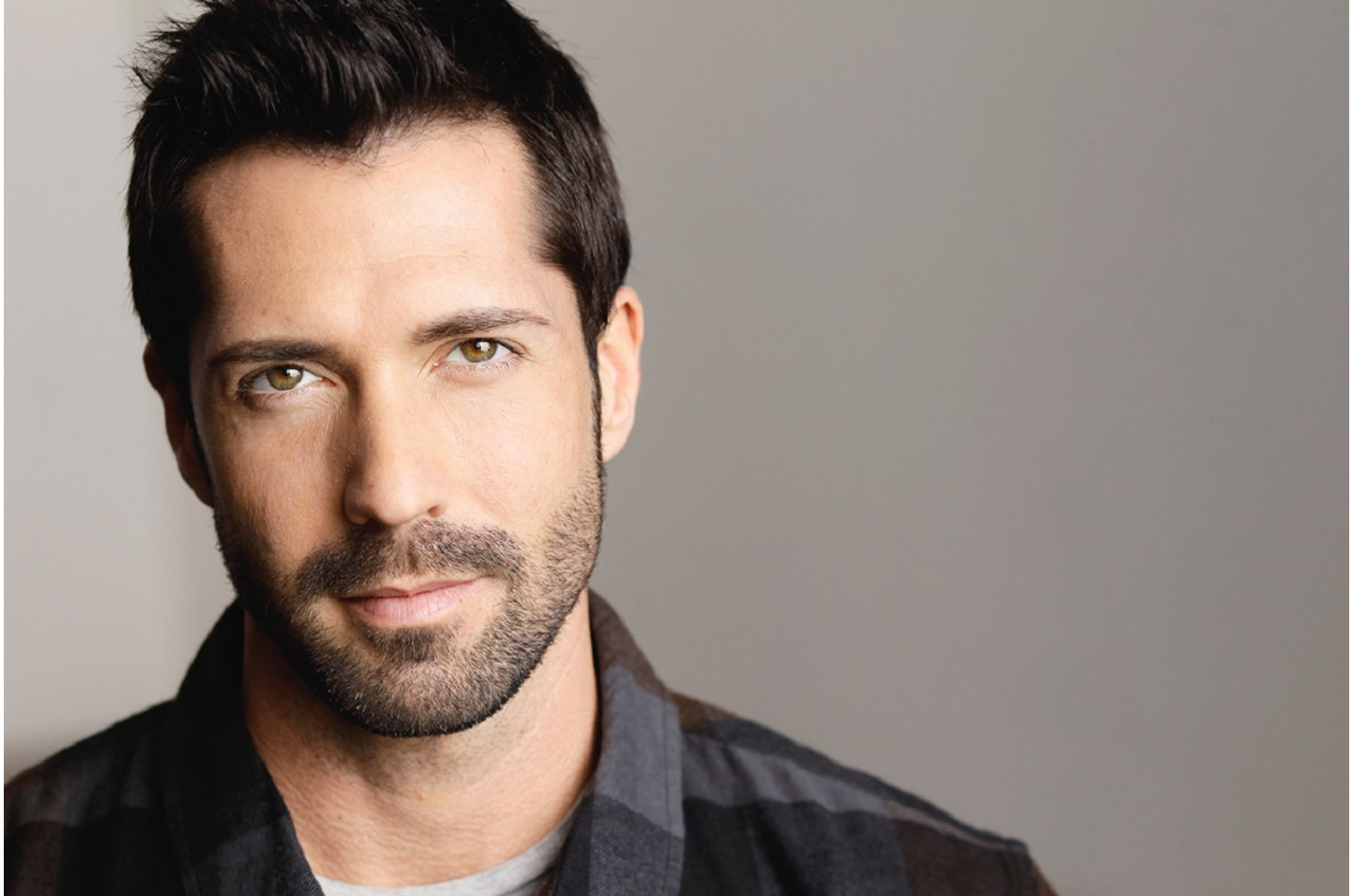
THE IMAGINED LIFE WORKSHOP	DIANA CASTLE	THE IMAGINED LIFE, LA
SCENE STUDY/ONGOING	JACK PLOTNICK	
SCENE STUDY/CLOSE-UP	JEREMIAH COMEY	JC FILM ACTING STUDIO, LA
COMMERCIAL CALLBACK	KILLIAN MCHUGH	KILLIAN'S WORKSHOP, LA
COLD READING	MARGIE HABER	MARGIE HABER, LA
IMPROV	VARIOUS	UPRIGHT CITIZENS BRIGADE, NYC
FILM/SOAP MASTER	LINDA LAUNDRA	WEIST-BARRON, NYC
BA: THEATRE	VARIOUS	WAGNER COLLEGE, NYC

### SPECIAL SKILLS

BOXING, HANDGUN/RIFLE CERTIFIED, HORSEBACK, BASIC PRECISION, MOTORCYCLE (M1), UKULELE, WEIGHTLIFTING, YOGA, BARTENDING, BASIC SURFING, QUICK STUDY DIALECTS/LANGUAGES, SPANISH

## PATRICK CRONEN

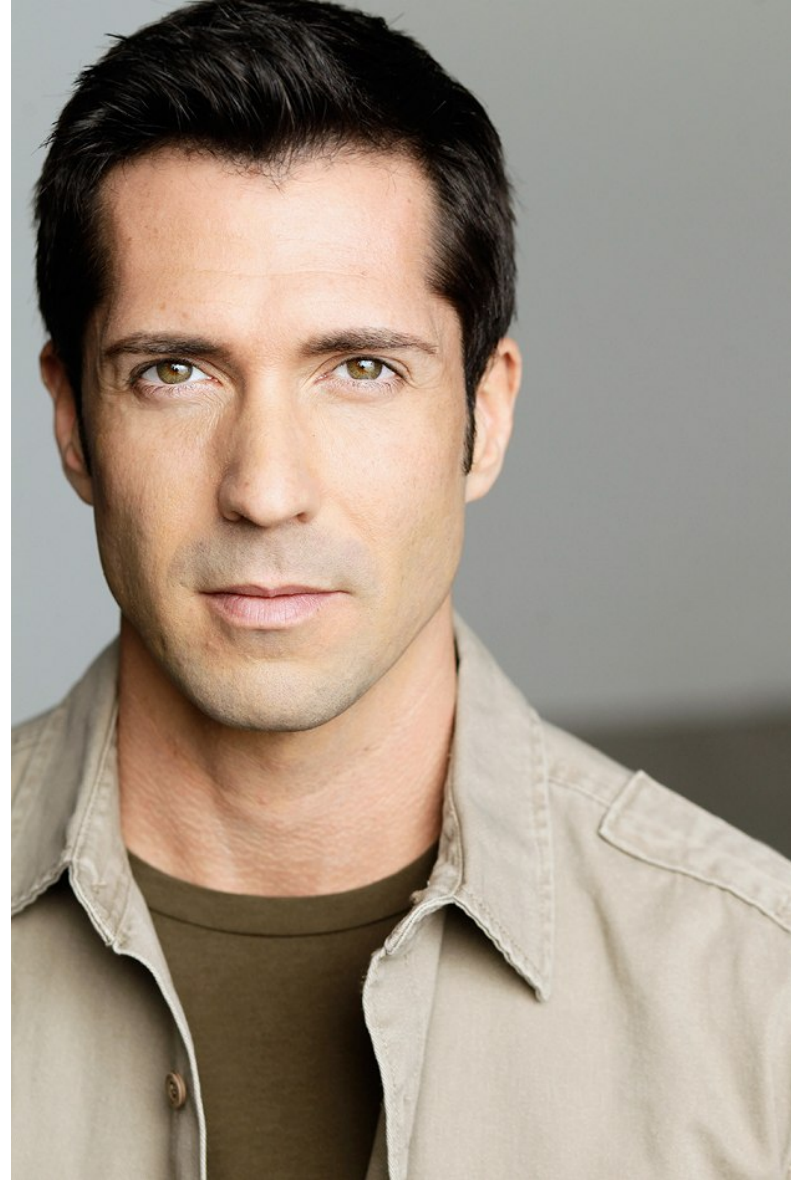
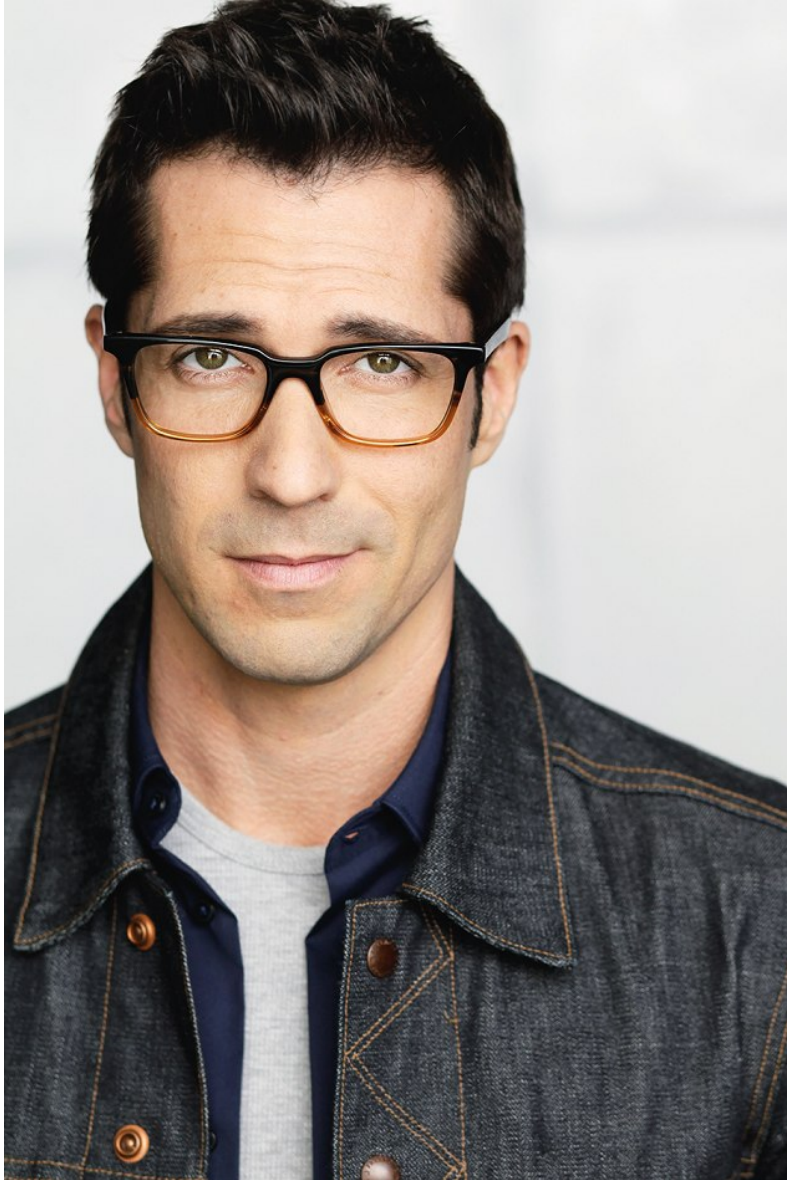
Height 5'10"    Waist 31.5"    Inseam 30.5"    Shoe 9 US    Hair Brown    Eyes Green



PATRICK CRONEN

Height 5'10"   Waist 31.5"   Inseam 30.5"   Shoe 9 US   Hair Brown   Eyes Green

PREMIER  
MODELS & TALENT



PATRICK CRONEN

Height 5'10"   Waist 31.5"   Inseam 30.5"   Shoe 9 US   Hair Brown   Eyes Green